

You are here



1



Civic Memorial Hall

The Memorial was constructed in 1930 as a tribute to the veterans of World War I.

2



Glenn County Court House

Built in 1894, it continues to serve as the court house for the County Seat.

W. Wood Street / Hwy 162 →



Humboldt Street ↓

W. Sycamore Street →

N. Tehama Street ↓

S. Tehama Street ↓



Discover Historic Downtown Willows

Welcoming Visitors Since 1886!

3



Century House

Currently a residence and antique shop, this Greek Revival style cottage was built in 1877.

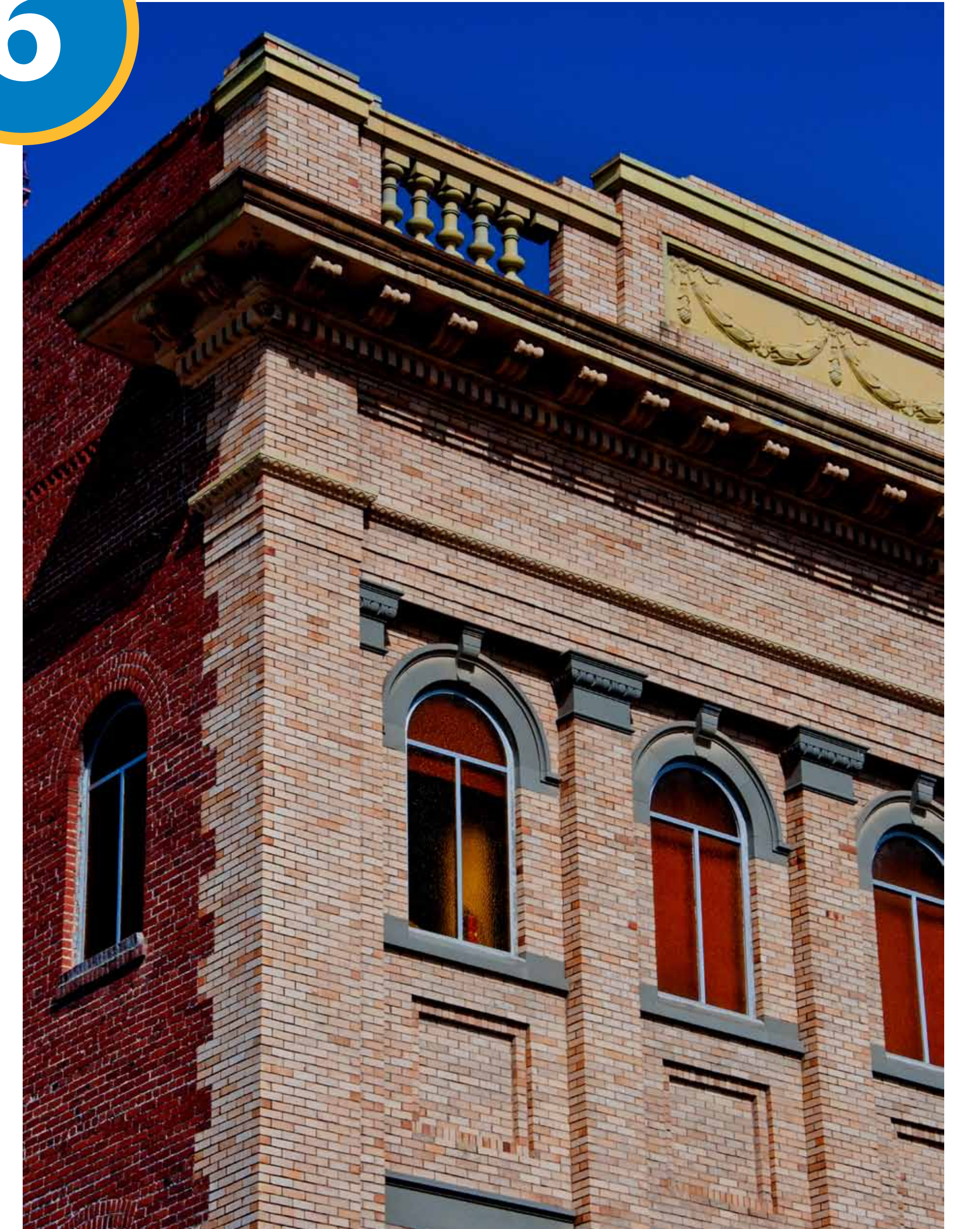
5



The Willows Post Office

Built in 1917, it also originally housed the Stony Reserve of the US Forest Service and the Glenn County Farm Advisor's Office.

6



The Masonic Building

Downtown's tallest building, it was erected in 1911 and housed the phone company.

4



Willows Museum

Built in 1911 as an Andrew Carnegie Library, the Museum is a beautiful example of Temple Style Classical Revival.

Downtown Willows also offers many dining and shopping opportunities!

7

To learn more, visit the Willows Chamber of Commerce and Tourism Bureau
118 W. Sycamore St. • www.WillowsChamber.com

