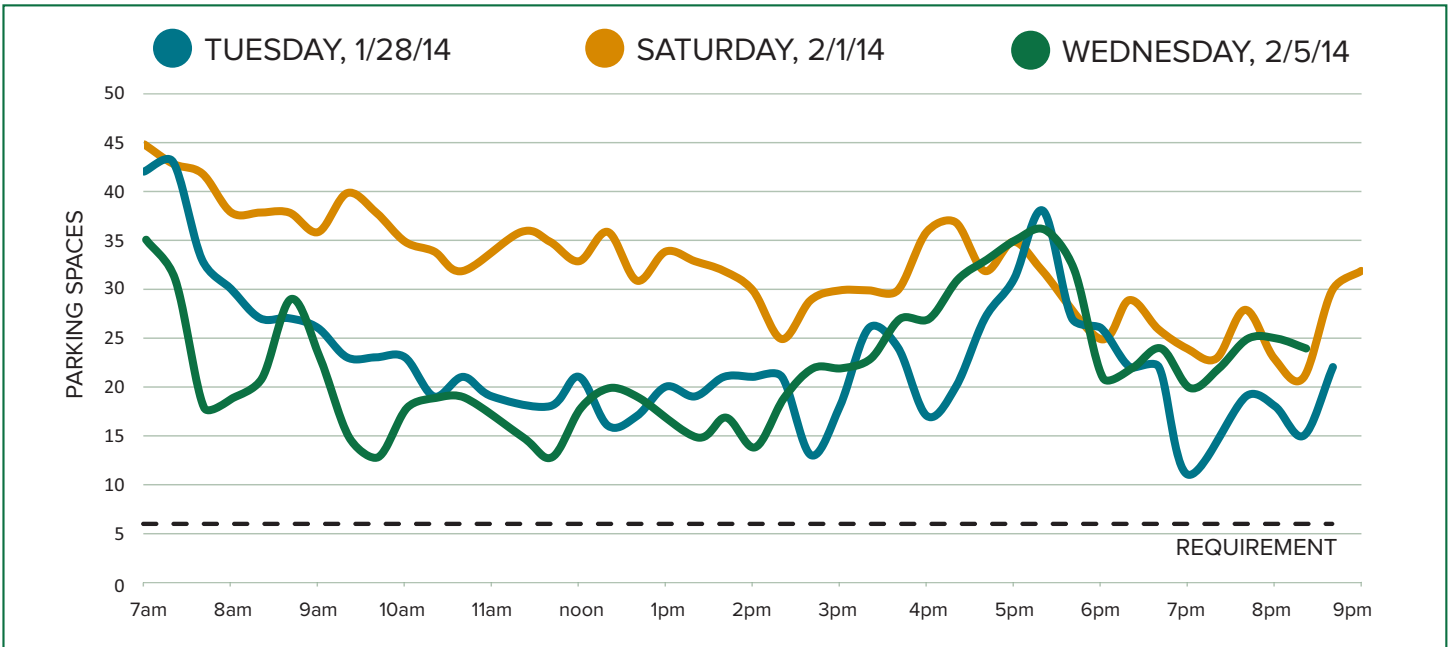




AMPLE PARKING AVAILABLE

Summary: At least 11 on-street parking spaces within 500 feet of the project site are available at all times.

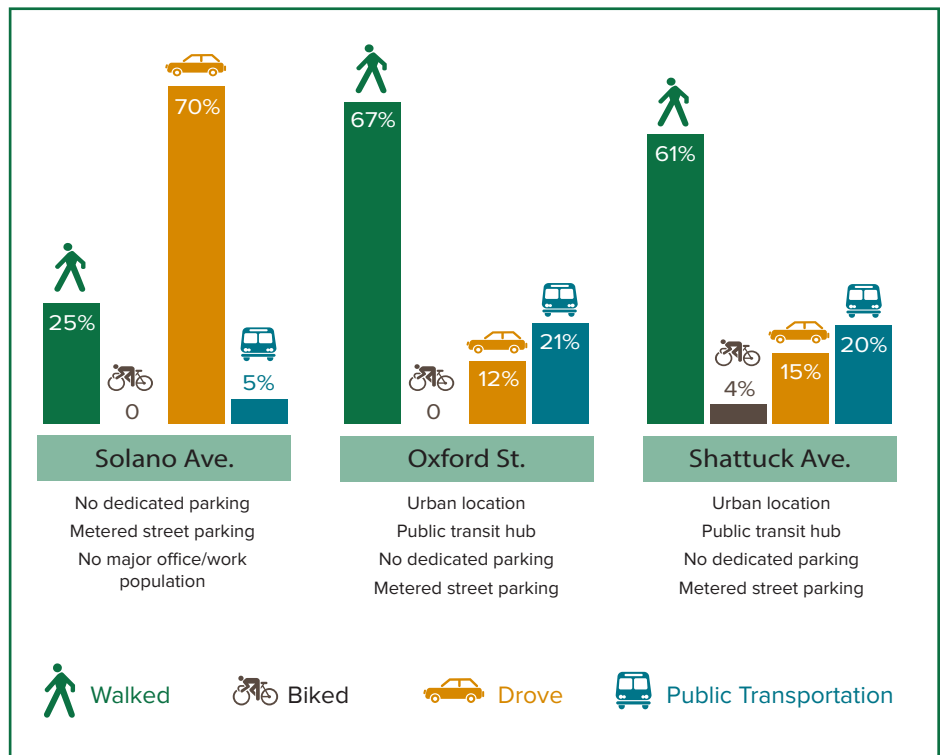
On average there were roughly 15-25 spaces available at all times, meaning the project exceeds the six spaces that are required to fulfill the condition.



PEDESTRIAN RICH ENVIRONMENT

The proposed store is in a prime location with access to AC Transit, Bart and a convenient walking distance for doctors, students, and adjacent neighbors.

We have found stores without dedicated parking encourage alternative forms of transportation – one of Berkeley’s goals.





A GOOD NEIGHBOR

- Part of the Berkeley community for over two decades and presently operate three stores at: 224 Shattuck Avenue, 2128 Oxford Street and 1799 Solano Avenue
- New store would generate over \$100,000 in taxes for the city
- We provide a “third-place” – a welcoming and inclusive gathering space where individuals can come to use free Wi-Fi, study, read or enjoy time with family or friends, away from home or work.
- Over 2,000 Berkeley residents, doctors, employees, students and area neighbors have expressed their support for this new café.
- Our menu provides consumers a wide assortment of choices and price points to meet customer needs. We are not the lowest common denominator, from a pricing perspective, in a community.



AT A GLANCE

- 2,063 square feet
- 25 new jobs offering opportunity for full benefits to partners (medical, tuition reimbursement, 401K, stock options)
- LEED certified green store
- Serving the community 7 days a week – weekdays from 5:30 am until 9 pm and weekends from 6 am until 9 pm
- Handcrafted beverages, whole bean and ground coffee, fresh food, Evolution Fresh juices with delicious pastries and baked goods from La Boulange Bakery



STARBUCKS SHARES BERKELEY'S VALUES

- Starbucks is ranked as one of the Top 50 Most Socially Responsible Companies in the US
- Consistently ranked as one of the 100 Best Places to Work
- Offering health care benefits to part-time employees since 1994 which will not change under the Affordable Care Act
- CEO Howard Schultz has been an outspoken advocate supporting issues like marriage equality and ending the federal government's political gridlock
- We share our customer's commitment to the environment and recycling, as an international advocate for ethical sourcing, environmental stewardship & resource conservation
- 100% of Starbucks cups in Berkeley are recyclable and/or compostable
- Founding Member United Way's Bay Area Roadmap to Cut Poverty Committee
- Founding Member of “Create Jobs USA”

